



FLEXBLOC



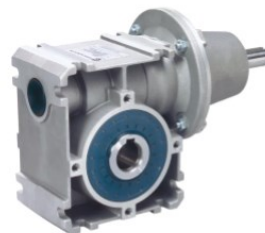
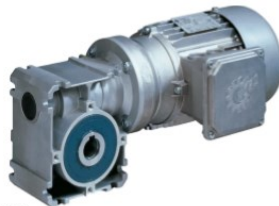
3

03.05.2017

IEC-Adaptor

Geared motor SIS-D

W Adapter



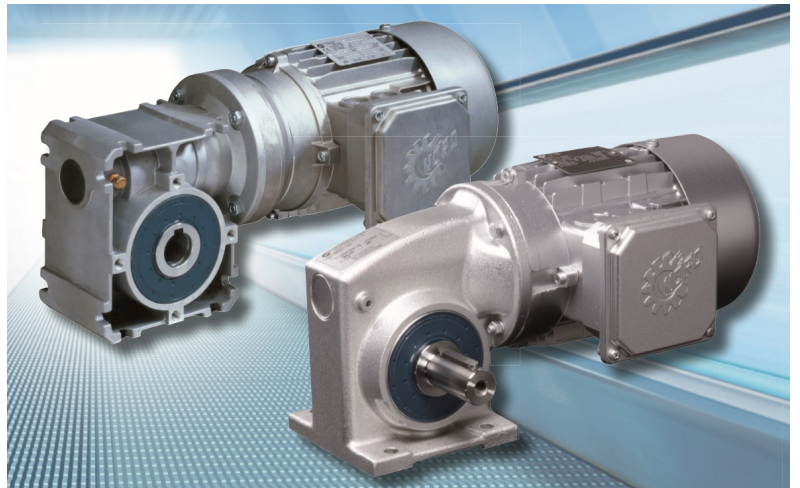
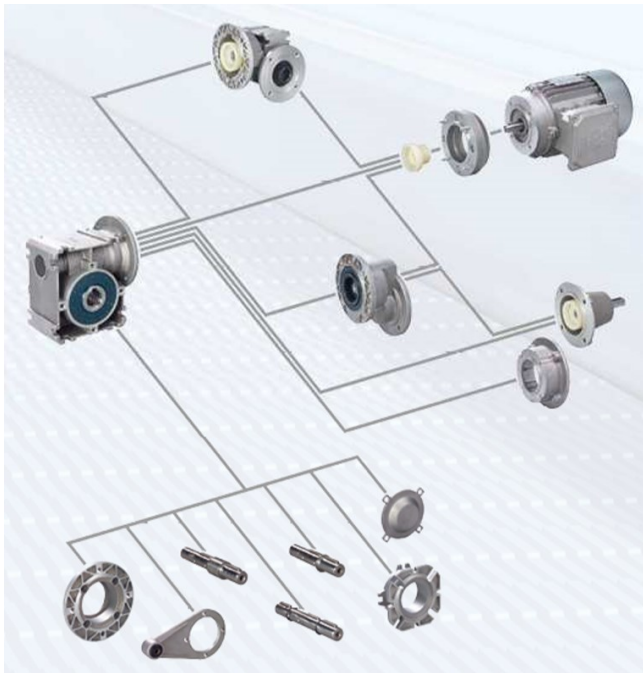
Helical Input H10
(not for SI31 / SI75)

Double Worm gear /31, /40
(not for SI31)

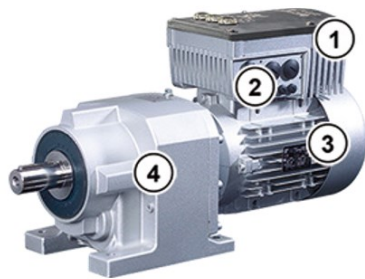


NORD FLEXBLOC Range





Unique type codes have been defined for the individual modules and devices. These provide individual details of the device type and its electrical data, protection class, fixing version and special versions. A differentiation is made according to the following groups:

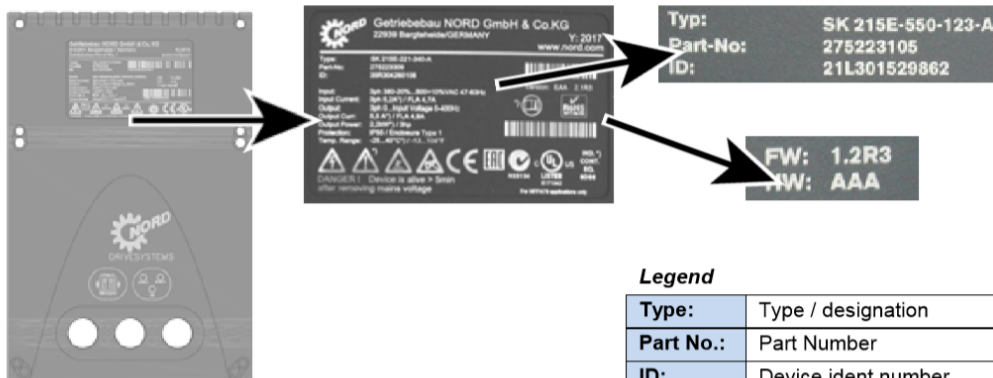


1	Frequency inverter
2	Connection unit
3	Motors
4	Gear units



5	Optional module
6	Connection unit
7	Wall-mounting kit

All of the information which is relevant for the device, including information for the identification of the device can be obtained from the type plate.



Legend

Type:	Type / designation
Part No.:	Part Number
ID:	Device ident number

FW:	Firmware version (x.x Rx)
HW:	Hardware version (xxx)

Helical gear unit (Catalogue G1000)



- ✓ Foot or flange mounted versions
- ✓ UNICASE housing

Sizes	11
kW	0,12 – 160
Nm	23 – 23.160
i	1,24:1 – 14.340,31:1

SMI worm gear units (Catalogue G1035)



- ✓ Smooth surface
- ✓ Lifetime oil filling

Sizes	5
kW	0,12 – 4,0
Nm	21 – 427
i	5,00:1 – 3.000,00:1

Helical worm gear units (Catalogue G1000)



- ✓ Push-on, foot or flange mounted versions
- ✓ Hollow or solid shaft
- ✓ UNICASE housing

Sizes	6
kW	0,12 – 15
Nm	46 – 3.090
i	4,40:1 – 7.095,12:1

Parallel shaft gear units (Catalogue G1000)



- ✓ Push-on, foot or flange mounted versions
- ✓ Hollow or solid shaft
- ✓ Compact design
- ✓ UNICASE housing

Sizes	15
kW	0,12 – 200
Nm	65 – 90.000
i	4,03:1 – 6.616,79:1

2-stage bevel gear units (Catalogue G1000, G1014)



- ✓ Up to 97% efficiency
- ✓ Push-on, foot or flange mounted versions
- ✓ Hollow or solid shaft
- ✓ UNICASE housing
- ✓ Die-cast aluminium housing

Sizes	5
kW	0,12 – 9,2
Nm	90 – 660
i	3,55:1 – 70:1

NORDBLOC.1 helical gear units (Catalogue G1000, G1012)



- ✓ Foot or flange mounted versions
- ✓ Die-cast aluminium housing (5 sizes)
- ✓ UNICASE housing
- ✓ Dimensions according to industrial standards

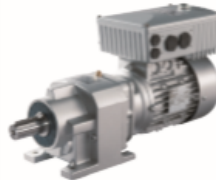
Sizes	8
kW	0,12 – 37
Nm	55 – 3.300
i	2,10:1 – 456,77:1

IE2/IE3 motors and components for decentralised drive control (Catalogue M7000)



- ✓ Single and 3-phase electric motors
- ✓ Further range of starters and components for decentralised drive control

SK 180E (F3018)



- ✓ PLC functionality
- ✓ Energy-saving function
- ✓ Ethernet-based BUS systems
- ✓ Decentralised modules combined as a system
- ✓ On board AS interface

Sizes	2
U[V]	1~100 ... 120±10% 1~200 ... 240±10% 3~380 ... 480 -20% / +10%
P[kW]	0,25 – 2,2

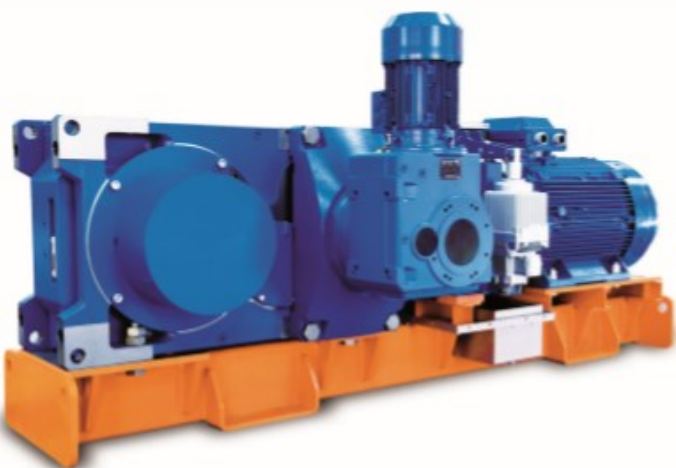
SK 200E (F3020)



- ✓ PLC functionality
- ✓ "Safe Stop" compliant with EN 954-1
- ✓ Commissioning via integrated DIP switches and potentiometers possible
- ✓ Energy-saving function
- ✓ Ethernet-based BUS systems
- ✓ Performance grading according to application
- ✓ Decentralised modules combined as a system
- ✓ Integrated "Posicon" positioning control
- ✓ On board AS interface versions

Sizes	4
U[V]	1~100 ... 120±10%
	1~200 ... 240±10%
	3~200 ... 240±10%
	3~380 ... 500 -20% / +10%
P[kW]	0,25 – 22

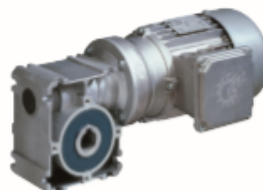
Industrial gear units (Catalogue G1050)



- ✓ All bearing points and sealing surfaces are machined in one operation
- ✓ No separating joints in the housing, therefore no sealing surfaces subject to torque
- ✓ High-precision axis alignment, quiet running
- ✓ Long life, low maintenance
- ✓ Short, compact design
- ✓ Gear ratios from 5.54 to 400: 1 with the same foot dimensions
- ✓ Parallel axis and right-angled gear units

Sizes	11
kW	2,2 - 3.000
kNm	up to 250
i	5,6 - 30.000:1

SI worm gear units (Catalogue G1035)



- ✓ Modular
- ✓ Universal fastening facilities
- ✓ IEC versions

Sizes	5
kW	0,12 – 4,0
Nm	21 – 427
i	5,00:1 – 3.000,00:1

3-stage bevel gear units (Catalogue G1000)



- ✓ Up to 95% efficiency
- ✓ Push-on, foot or flange mounted versions
- ✓ Hollow or solid shaft
- ✓ UNICASE housing

Sizes	11
kW	0,12 – 200
Nm	180 – 50.000
i	8,04:1 – 13.432,68:1

SK 500E (F3050)



- ✓ PLC functionality
- ✓ Compact design
- ✓ Energy-saving function
- ✓ Performance grading according to application (e.g.: "Posicon" positioning control)
- ✓ Push-on modules for control and communication (field bus)
- ✓ Ethernet-based BUS systems

Sizes	11
U[V]	1~110 ... 120±10%
	1/3 ~200 ... 240±10%
	3~200 ... 240±10%
	3~380 ... 480 -20% / +10%
P[kW]	0,25 – 160