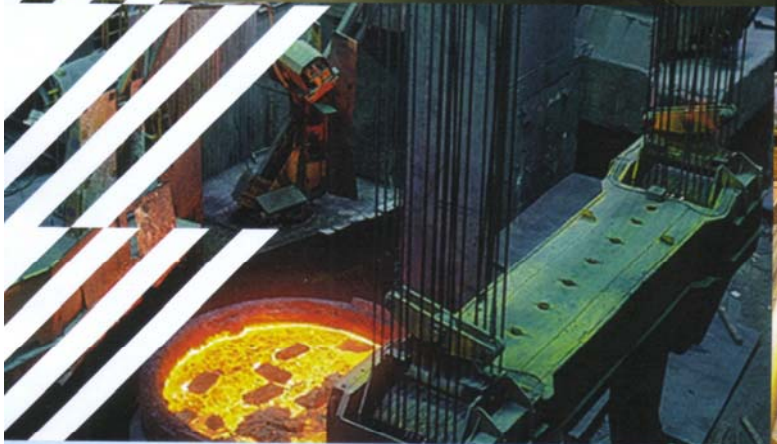
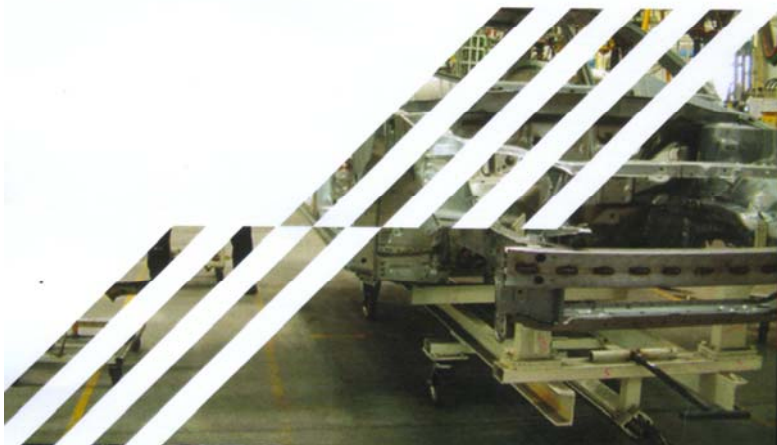




British Standard Conveyor Chain



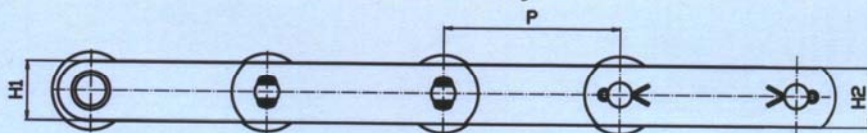
*British Standard Solid Pin
Conveyor Chain*

*British Standard Hollow Pin
Conveyor Chain*

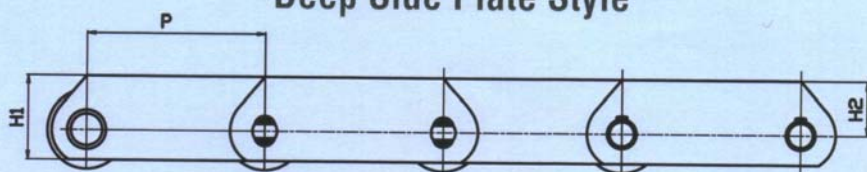
British Standard Attachments

*British Standard Deep Side
Plate Conveyor Chain*


Solid Pin Style



Deep Side Plate Style

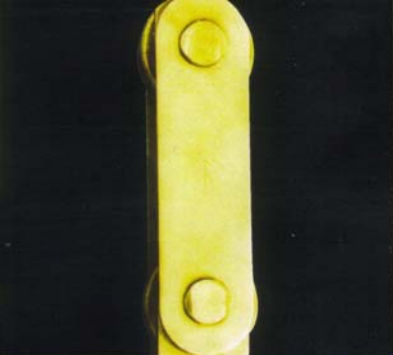


Tsubaki Australia is proud to introduce to the market the 'New Standard' in "British Standard Conveyor Chain". With Features, Quality and Performance never seen before and Service and Support from the name you know you can trust.




Shot Peened to All Components

Shot peened for greater fatigue strength and durability. Means a longer working life, less down time and higher performance.



Statically Pre - Loaded

This process applies 1/3 of the rated breaking load to the chain ensuring component Alignment & Geometry Squareness which reduces initial wear and take up during the first stages of operation.



Blanked Curved Edge Link Plates

Blanked link plates for greater consistence in dimensional tolerances. Curved link plates prevent edges of links rising during engagement with the sprockets for ease of product transfer. Easier and safer handling for maintenance and installation.



Lubrication

FUCHS™ grease
ISO 9001:2000 Certified
with over 75 years of service to the industry.

Additional Services and Features

Additional Service

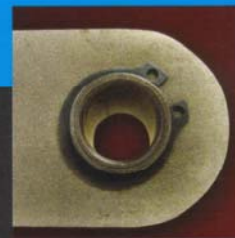
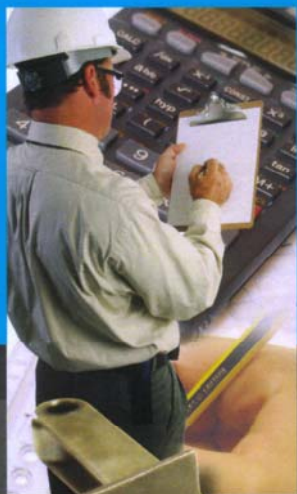
Qualified Engineering Support
Infield Service Support
Infield Technical Support

Special Chain Features

Bolted Connecting Links
Circlip Hollow Pin Connectors
Rivet Connecting Links

Special Materials and Coatings

Stainless Steel
Zinc Plated
Galvanized Plated
Nickel Plated
MolyBonded™ Coated
ZAC - Coated



For further information please contact: **TSUBAKI Australia Pty Ltd**
Web Address: www.tsubaki.com.au Email Address: sales@tsubaki.com.au

Sydney:
Ph + [61] (0) 2 9648 5269
Fax + [61] (0) 2 9648 3115

Brisbane:
Ph + [61] (0) 7 3273 6033
Fax + [61] (0) 7 3273 6868

Melbourne:
Ph + [61] (0) 3 9562 5898
Fax + [61] (0) 3 9562 5707

Perth:
Ph + [61] (0) 8 9356 9700
Fax + [61] (0) 8 9356 9800



ISO 9001:2000
Lic 5140
SAI Global