

Synthetic Fibre Conveyor Rollers



1. Roller shell
2. Strengthening Ribs
3. Shaft
4. Bearing Housing
5. Contaminant Grooves
6. Double Shielded bearing
7. Female labyrinth
8. labyrinth seals
9. Male labyrinth
- 10 Seal ring

Characteristics Of Long Life Synthetic Rollers:

1. Corrosion resistant

The main body is injection moulded from high impact synthetic fibre resins. This material is anti-corrosive, acid and alkaline resistant, and is suitable for use in damp applications.

2. Perfect dynamic balancing :

The rollers are high pressure injection moulded, and are dimensionally accurate. The dynamic balance is held within very tight tolerances , reducing vibration in the conveyor belt.

3. Labyrinth bearing seal :

The adoption of multiple labyrinth bearing seals, and the use of high quality lubricants ensures maximum bearing protection from the ingress of water, dust and other contaminants.

4. Light weight, Energy saving :

Fibre rollers are lightweight with low rotational mass, giving an energy saving..

5. Easy to maintain :

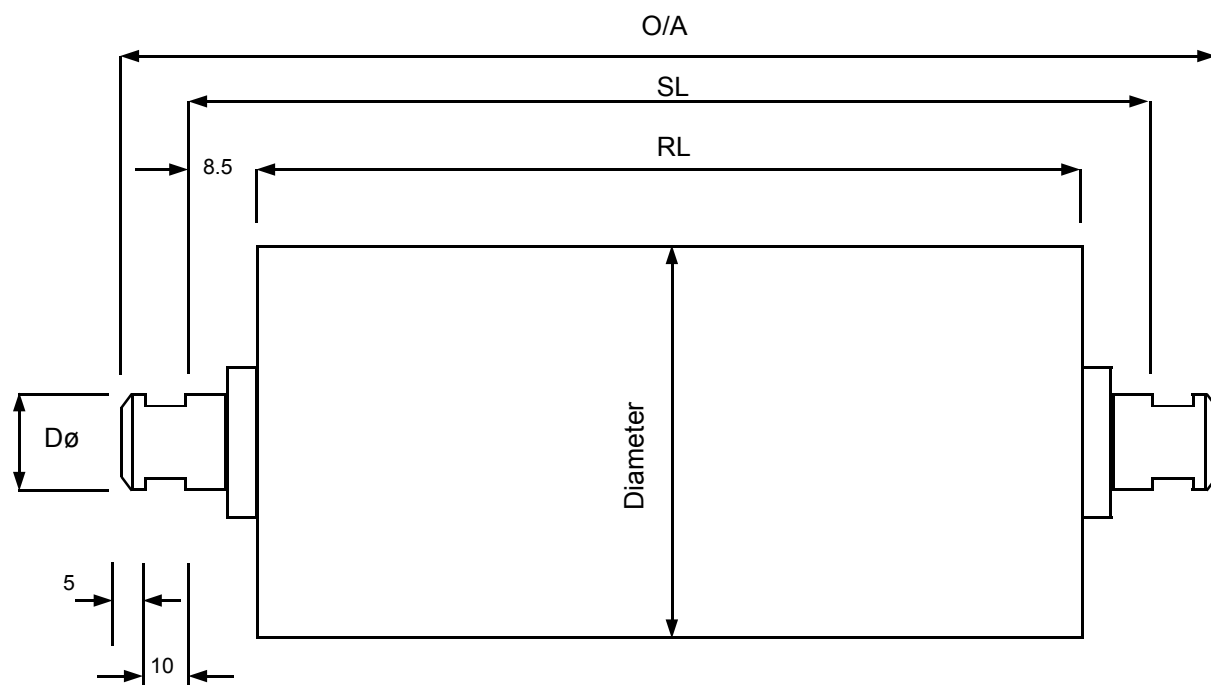
With the adoption of the labyrinth style seal and pre lubricated bearings, there is no requirement for further bearing lubrication. The synthetic material helps prevent surface build up on the roller, which if left, can effect belt tracking.

6. Anti-static resistance :

An anti static additive is added to the roller material which prevents the build up of static. This makes the rollers suitable for use in dusty environments.

Synthetic Fibre Conveyor Rollers

Roller Dimensions



Trough Rollers	Diameter	RL	SL	O/A
KTR114-450	114	172	189	219
KTR114-600	114	224	241	271
KTR114-750	114	278	295	325
KTR114-900	114	331	348	378
KTR114-1200	114	436	453	483

Return Rollers	Diameter	RL	SL	O/A
KRR114-450	114	544	561	591
KRR114-600	114	694	711	741
KRR114-750	114	844	861	891
KRR114-900	114	994	1011	1041
KRR114-1200	114	1294	1311	1341

