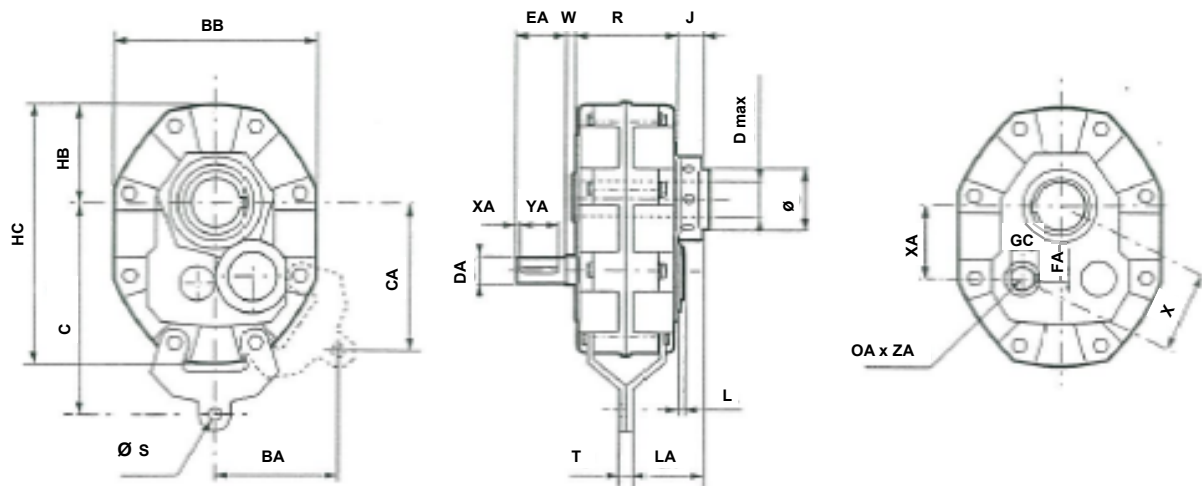


# Leroy Somer Shaft Mount Gear Units



- ♦ Rigid cast iron housing, precision machined for correct gear alignment.
- ♦ Ground and shaved case hardened gears to Rockwell C60/64.
- ♦ Magnetic drain plug as standard.
- ♦ Oversize taper roller bearings, ground and polished shafts.
- ♦ Easily installed backstops.
- ♦ Unique taper bushing makes easier fitting and removing.
- ♦ Supplied with adjustable torque arm and locking spanner.

## Dimensions for Poulibloc Type PB20 to PB26



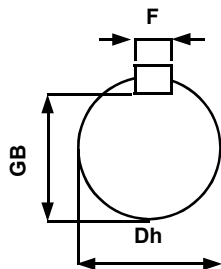
Type	BA	BB	C	CA	D	HB	HC	J	L	LA	R	D	T	X	XA	DIA	kg
PB20	112	198	210	140	40	90	245	30	12	84	108	16	10	85	77	52	19
PB21	123	214	227	153	50	100	269	33	17	88	120	16	10	92	84	64	24
PB22	139	252	260	177	55	118	320	36	25	99	131	16	10	107	96	68	32
PB23	156	254	290	204	60	133	361	36	21	106	147	16	10	126	112	80	52
PB24	191	315	332	233	75	146	395	38	26	123	170	16	10	145	132	97	86
PB25	212	357	378	264	85	165	452	50	24	135	210	17	216	164	145	108	106
PB26	245	410	439	306	100	191	522	61	23	157	236	17	20	192	172	135	158

Type	DA	EA	FA	GC	XA	YA	OA	ZA	W
PB20	24	60	8	275	6	48	M8	19	4
PB21	28	60	8	275	6	48	M8	22	3
PB22	32	80	10	35	4	72	M10	22	8
PB23	35	80	10	38	3	72	M12	26	4
PB24	50	110	14	53.5	5	100	M16	36	8.5
PB2505	38	80	10	41	5	70	M12	26	13
PB2512-PB2520	50	110	14	53.5	5	100	M16	36	13
PB2605	48	120	14	51.5	3	112	M16	36	6
PB2612-PB2620	55	120	16	59	5	105	M16	36	6

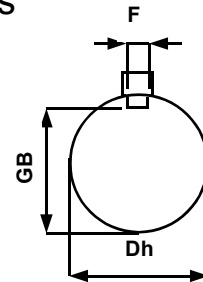
## PB 2000 Kilowatt and maximum Torque Ratings

Output rpm	PB2020	PB2120	PB2220	PB2320	PB2420	PB2520	PB2620	PB2720
10	0.65	.095	1.48	2.96	3.35	5.84	.93	16.61
16	1.03	1.51	2.08	4.69	5.32	8.50	14.15	26.28
20	1.21	1.88	2.43	6.48	6.52	9.91	17.50	32.65
25	1.41	2.33	2.85	5.40	8.05	11.57	21.30	40.54
31.5	1.55	2.75	3.34	7.54	8.49	13.57	25.09	49.25
35.5	1.78	2.99	3.63	8.19	10.30	14.77	27.18	53.58
40	1.93	3.25	3.97	8.94	11.23	16.05	29.69	58.30
45	2.09	3.53	4.30	9.69	12.15	17.48	32.13	63.28
50	2.25	3.80	4.63	10.45	13.09	18.80	34.57	67.97
56	2.42	4.11	5.02	11.29	14.19	20.38	37.50	73.83
63	2.62	4.47	5.45	12.28	15.35	22.10	40.66	79.97
71	2.84	4.85	5.92	13.33	16.72	24.07	44.22	87.03
80	3.08	5.27	6.42	14.50	18.21	26.17	48.05	94.53
90	3.32	5.74	6.96	15.72	19.78	28.42	52.25	102.73
Max output Toque Nm	630 Nm	910 Nm	1410 Nm	2830 Nm	3200 Nm	5580 Nm	8530 Nm	15860 Nm

### Taper Bush Dimensions



\* Small Bore type



\*\* Large Bore type

Dia (D)	20	25	30	35	40	45	50	55	60	65	70	75	80	85	90	95	100	110	120
F	6	8	8	10	12	14	14	16	18	18	20	20	22	22	25	25	28	28	32
GB	16.5	21	26	30	35	39.5	44.5	49	53	58	62.5	67.5	71	76	81	86	90	100	109
GA	22.5	28	33	38	43	48.5	53.5	59	64	69	74.5	79.5	85	90	95	100	106	116	127
PB2020	*	*	*	**	**														
PB2120		*	*	*	*	**	**												
PB2220			*	*	*	*	**	**											
PB2320				*	*	*	*	**	**										
PB2420						*	*	*	*	*	**	**							
PB2520									*	*	*	*	**	**					
PB2620											*	*	*	*	*	**	**		
PB2720																*	*	*	*

### Service Factors

Operation (Hours / day)	Type of Function		
	Regular Uniform Load Service Factor	Moderate Shock Load Service Factor	Heavy Shock Load Service Factor
Under 3 hours	1.0	1.25	1.5
Under 10 hours	1.25	1.5	1.75
Under 24 hours	1.75	2	2.25