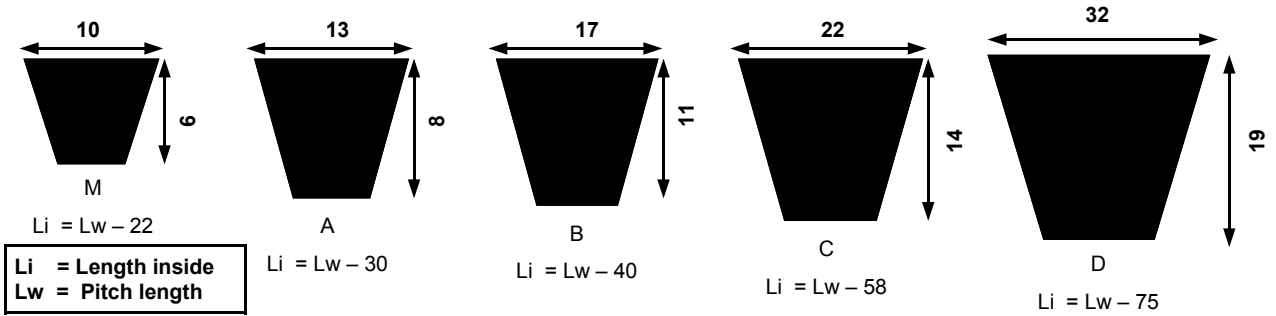


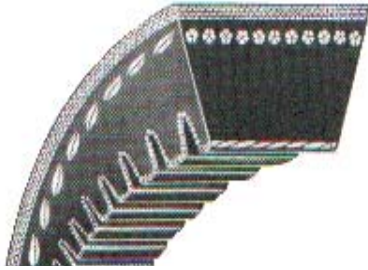
## Carlisle Classical Vee Belts.

Carlisle's standard range of classical vee belts. These are available in M, A,B, C, and D, sections. Wrap built construction and meets the RMA standards for matching. Oil and heat resistant, and static dissipating. Carlisle classical vee belts are also available in banded construction.



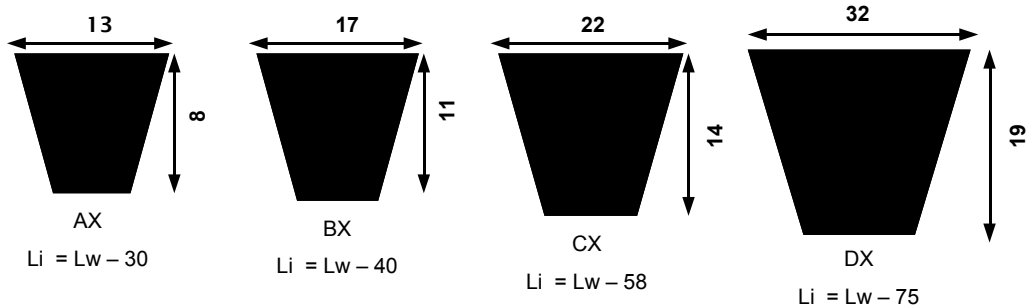
M13	M40	A32	A58	A84	A136	B48	B74	B100	B155	C68	C115	C204
M15	M41	A33	A59	A85	A144	B49	B75	B102	B156	C70	C116	C210
M16	M42	A34	A60	A86	B24	B50	B76	B103	B158	C71	C120	C216
M17	M43	A35	A61	A87	B25	B51	B77	B105	B162	C72	C124	C225
M18	M44	A36	A62	A88	B26	B52	B78	B106	B166	C74	C128	C228
M19	M45	A37	A63	A89	B27	B53	B79	B108	B173	C75	C131	C238
M20	M46	A38	A64	A90	B28	B54	B80	B110	B180	C76	C132	C240
M21	M47	A39	A65	A91	B29	B55	B81	B112	B195	C78	C134	C250
M22	M47.5	A40	A66	A92	B30	B56	B82	B114	B210	C81	C136	C255
M23	M48	A41	A67	A93	B31	B57	B83	B115	C40	C83	C140	C268
M24	M49	A42	A68	A94	B32	B58	B84	B116	C42	C84	C144	C270
M25	M50	A43	A69	A95	B33	B59	B85	B118	C44	C85	C146	C300
M26	A18	A44	A70	A96	B34	B60	B86	B120	C46	C87	C148	C330
M27	A19	A45	A71	A97	B35	B61	B87	B124	C48	C90	C150	C360
M28	A20	A46	A72	A98	B36	B62	B88	B126	C51	C92	C152	D144
M29	A21	A47	A73	A99	B37	B63	B89	B128	C53	C93	C154	D148
M30	A22	A48	A74	A100	B38	B64	B90	B130	C55	C94	C158	D150
M31	A23	A49	A75	A102	B39	B65	B91	B134	C56	C95	C162	D162
M32	A24	A50	A76	A105	B40	B66	B92	B136	C58	C96	C164	D173
M33	A25	A51	A77	A108	B41	B67	B93	B140	C59	C97	C165	D180
M34	A26	A52	A78	A110	B42	B68	B94	B142	C60	C100	C166	D195
M35	A27	A53	A79	A112	B43	B69	B95	B144	C61	C105	C170	D210
M36	A28	A54	A80	A115	B44	B70	B96	B146	C62	C108	C173	D225
M37	A29	A55	A81	A120	B45	B71	B97	B148	C63	C110	C180	D240
M38	A30	A56	A82	A124	B46	B72	B98	B150	C64	C112	C185	D270
M39	A31	A57	A83	A128	B47	B73	B99	B152	C65	C114	C195	

## Carlisle Gold Label Cog Vee belts.



The Carlisle Gold Label cog belt is industries premium classical vee belt. The moulded notches on the underside of the belt makes it much more flexible, and allows it to run in smaller pulleys. Raw edge construction offers higher HP and less slip. Neoprene construction gives maximum oil and heat resistance, and static dissipation. Available in AX, BX, CX, and DX construction.

Li = Length inside  
Lw = Pitch length



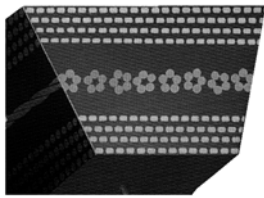
AX24	AX47	AX78	BX45	BX66	BX99	CX81
AX26	AX48	AX80	BX46	BX67	BX100	CX85
AX28	AX49	AX85	BX47	BX68	BX103	CX90
AX29	AX50	AX90	BX48	BX69	BX105	CX96
AX30	AX51	AX92	BX49	BX70	BX108	CX101
AX31	AX52	AX96	BX50	BX71	BX112	CX105
AX32	AX53	AX105	BX51	BX74	BX115	CX109
AX33	AX54	AX110	BX52	BX75	BX120	CX112
AX34	AX55	AX112	BX53	BX77	BX124	CX115
AX35	AX56	AX120	BX54	BX78	BX128	CX120
AX36	AX57	BX28	BX55	BX79	BX136	CX128
AX37	AX58	BX32	BX56	BX80	BX144	CX136
AX38	AX59	BX34	BX57	BX81	BX158	CX144
AX39	AX60	BX35	BX58	BX82	CX45	CX158
AX40	AX62	BX36	BX59	BX83	CX48	CX180
AX41	AX64	BX38	BX60	BX85	CX51	CX210
AX42	AX66	BX40	BX61	BX90	CX56	
AX43	AX68	BX41	BX62	BX93	CX60	
AX44	AX70	BX42	BX63	BX95	CX68	
AX45	AX71	BX43	BX64	BX96	CX70	
AX46	AX75	BX44	BX65	BX97	CX75	



## Carlisle Aramax Vee Belts

Carlisle Aramax vee belts are designed for the most abusive “Classical” vee belt drives. Aramax vee belts have Kevlar tensile reinforcing members for minimal stretch, even under the harshest conditions. The unique bareback cover fabric makes Aramax vee belts suitable for clutching drives and drives with back idlers. This makes Aramax vee belts ideally suited for agricultural drive applications and commercial outdoor power equipment.

Standard Aramax Sizes								
AK26	AK51	AK63	AK105	BK54	BK66	BK95	BK158	CK120
AK31	AK52	AK64	BK35	BK55	BK68	BK97	BK173	CK128
AK33	AK53	AK66	BK38	BK56	BK70	BK100	BK195	CK136
AK35	AK54	AK68	BK40	BK57	BK71	BK103	CK68	CK144
AK38	AK55	AK70	BK42	BK58	BK75	BK105	CK75	CK158
AK40	AK56	AK71	BK44	BK59	BK78	BK108	CK81	CK162
AK42	AK57	AK75	BK46	BK60	BK80	BK112	CK85	CK173
AK44	AK58	AK78	BK48	BK61	BK81	BK120	CK90	CK180
AK46	AK59	AK80	BK50	BK62	BK83	BK124	CK96	CK195
AK47	AK60	AK85	BK51	BK63	BK85	BK128	CK100	
AK48	AK61	AK90	BK52	BK64	BK90	BK136	CK105	
AK50	AK62	AK96	BK53	BK65	BK93	BK144	CK112	



## Carlisle Super 2 Vee Belts

Carlisle Super 2 vee belts are engineered for the toughest high torque drives. Specially treated Polyester tensile strength members minimise stretch, and due to their position within the belt, can be safely used with back idlers. The unique raw edge construction offers maximum grip while still allowing for controlled slip under abnormally high shock loadings.

Standard Super 2 Sizes									
Super A24	Super A43	Super A61	Super A79	Super A120	Super B48	Super B66	Super B84	Super B 116	Super C96
Super A26	Super A44	Super A62	Super A80	Super A128	Super B49	Super B67	Super B85	Super B 120	Super C 100
Super A27	Super A45	Super A63	Super A81	Super A136	Super B50	Super B68	Super B86	Super B124	Super C105
Super A28	Super A46	Super A64	Super A82	Super A144	Super B51	Super B69	Super B87	Super B128	Super C109
Super A29	Super A47	Super A65	Super A83	Super B28	Super B52	Super B70	Super B88	Super B136	Super C112
Super A30	Super A48	Super A66	Super A84	Super B32	Super B53	Super B71	Super B90	Super B144	Super C115
Super A31	Super A49	Super A67	Super A85	Super B34	Super B54	Super B72	Super B92	Super B150	Super C120
Super A32	Super A50	Super A68	Super A86	Super B35	Super B55	Super B73	Super B93	Super B158	Super C128
Super A33	Super A51	Super A69	Super A88	Super B36	Super B56	Super B74	Super B94	Super B162	Super C136
Super A34	Super A52	Super A70	Super A90	Super B38	Super B57	Super B75	Super B95	Super B173	Super C144
Super A35	Super A53	Super A71	Super A92	Super B40	Super B58	Super B76	Super B96	Super B180	Super C150
Super A36	Super A54	Super A72	Super A94	Super B41	Super B59	Super B77	Super B97	Super B195	Super C158
Super A37	Super A55	Super A73	Super A96	Super B42	Super B60	Super B78	Super B98	Super C60	Super C162
Super A38	Super A56	Super A74	Super A98	Super B43	Super B61	Super B79	Super B100	Super C68	Super C173
Super A39	Super A57	Super A75	Super A100	Super B44	Super B62	Super B80	Super B103	Super C75	Super C180
Super A40	Super A58	Super A76	Super A103	Super B45	Super B63	Super B81	Super B105	Super C81	Super C195
Super A41	Super A59	Super A77	Super A105	Super B46	Super B64	Super B82	Super B108	Super C85	
Super A42	Super A60	Super A78	Super A112	Super B47	Super B65	Super B83	Super B112	Super C90	